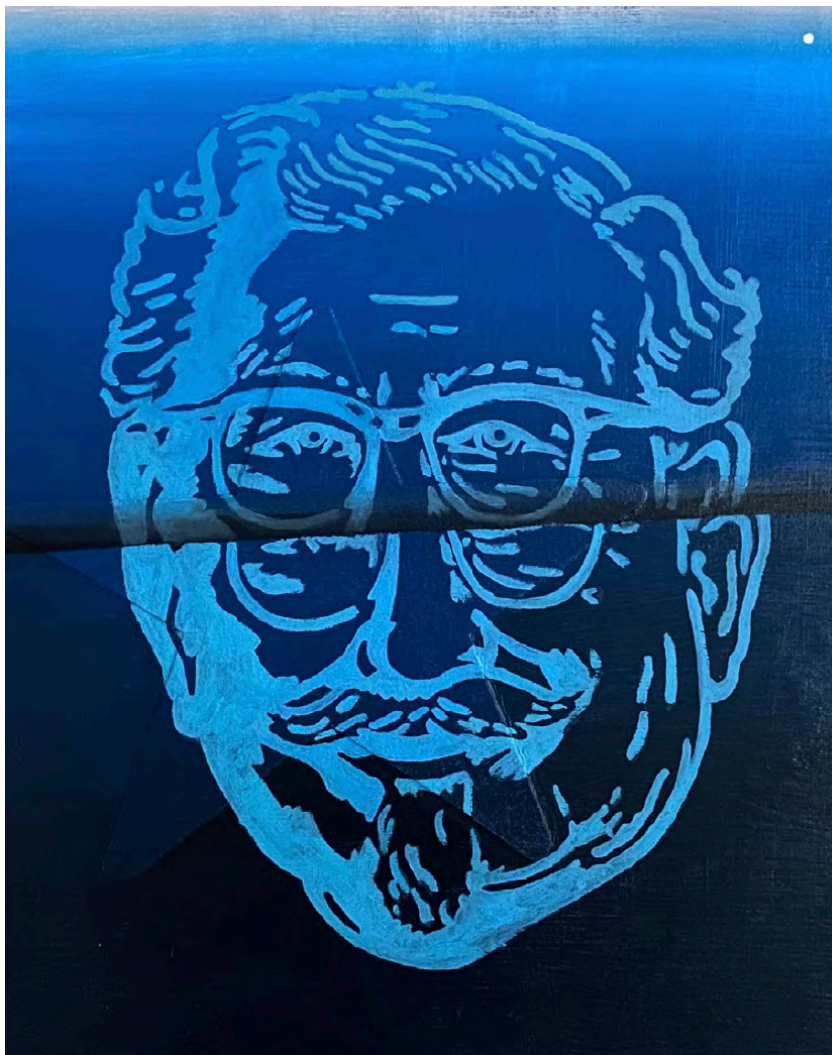


# CJ SHAW

---

CRACKS IN THE GLASS:  
2022 UNDERGRADUATE FINE ARTS  
THESIS EXHIBITION



**DEPS ARTIST PROFILE SERIES**

MAY 12-JUNE 16, 2022

# CRACKS IN THE GLASS: 2022 UNDERGRADUATE FINE ARTS THESIS EXHIBITION

---

*cracks in the glass: 2022 Undergraduate Fine Arts Thesis Exhibition* features the works of eleven BFA candidates in Columbia's Fine Arts program. The exhibition, which includes paintings, drawings, prints, books, video, performance and installation works, represents the culmination of four years worth of development of a cohesive body of work for each artist while earning their degrees.

Participating artists:

Lisette Chevalier  
Micaela Felix  
K.R. Fowler  
Nadia Khan  
Viy Lahowetz  
Nicole Leung  
Alexis Malone-Alvarado  
Caroline Robinson  
SEAH  
CJ Shaw  
Aleida Zapata

*cracks in the glass: 2022 Undergraduate Fine Arts Thesis Exhibition* is presented in conjunction with the Department of Exhibitions, Performance and Student Spaces (DEPS), the Art and Art History department, and Adam Brooks, Professor at Columbia College Chicago.

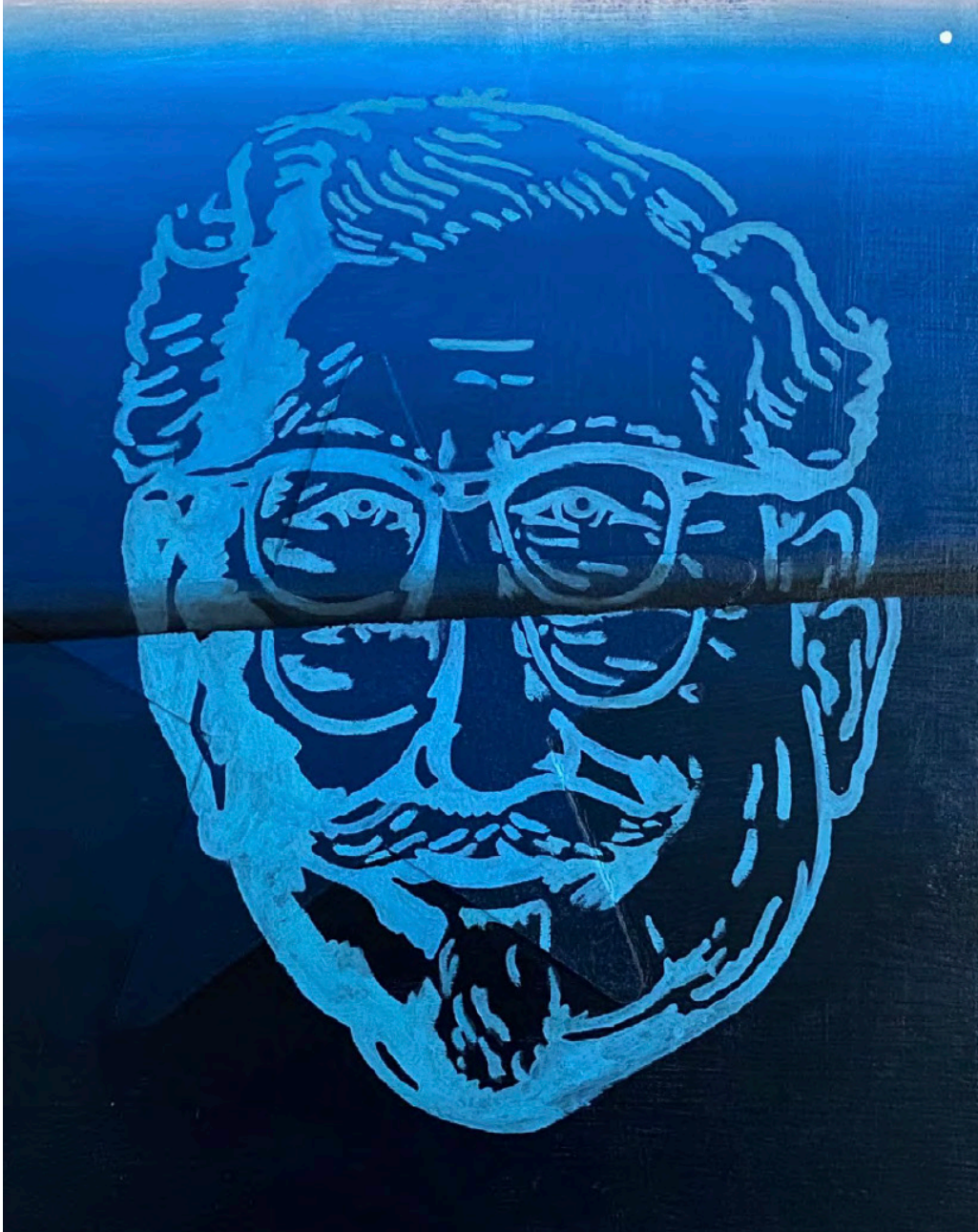
# CJ SHAW

---

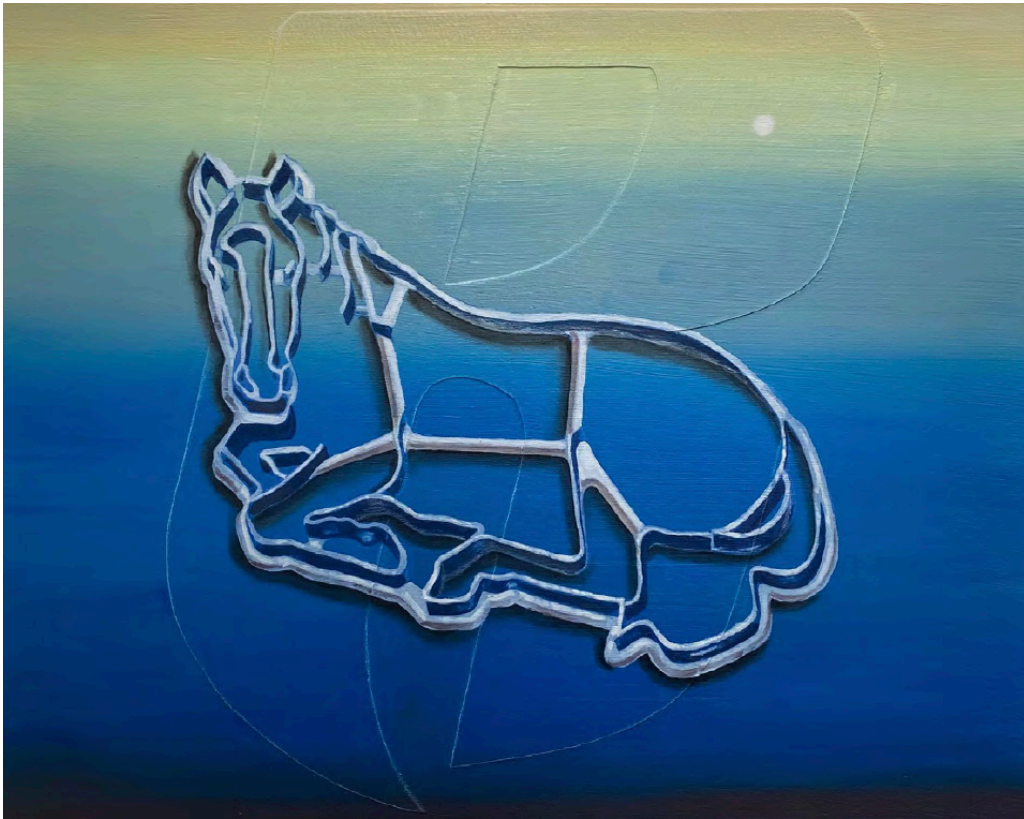
In his work Shaw tries to re-present personal imagery from his childhood. He creates icons that serve to preserve personal memories. When thinking of icons, or rather the act of iconization, Shaw thinks of images from his childhood. To put it quite simply those images were that, icons that were larger than life, or at least that's how Shaw remembers them at that time in his life. Most of the time he accomplishes this through oil painting and text although he's not sure where his work will go or look like in the future.

**CJ Shaw**, born in 1998, is a Chicago based artist. He uses oil paint, text, and personal imagery to explore western culture and media.

**Instagram:** [@cjshaw44](https://www.instagram.com/cjshaw44)



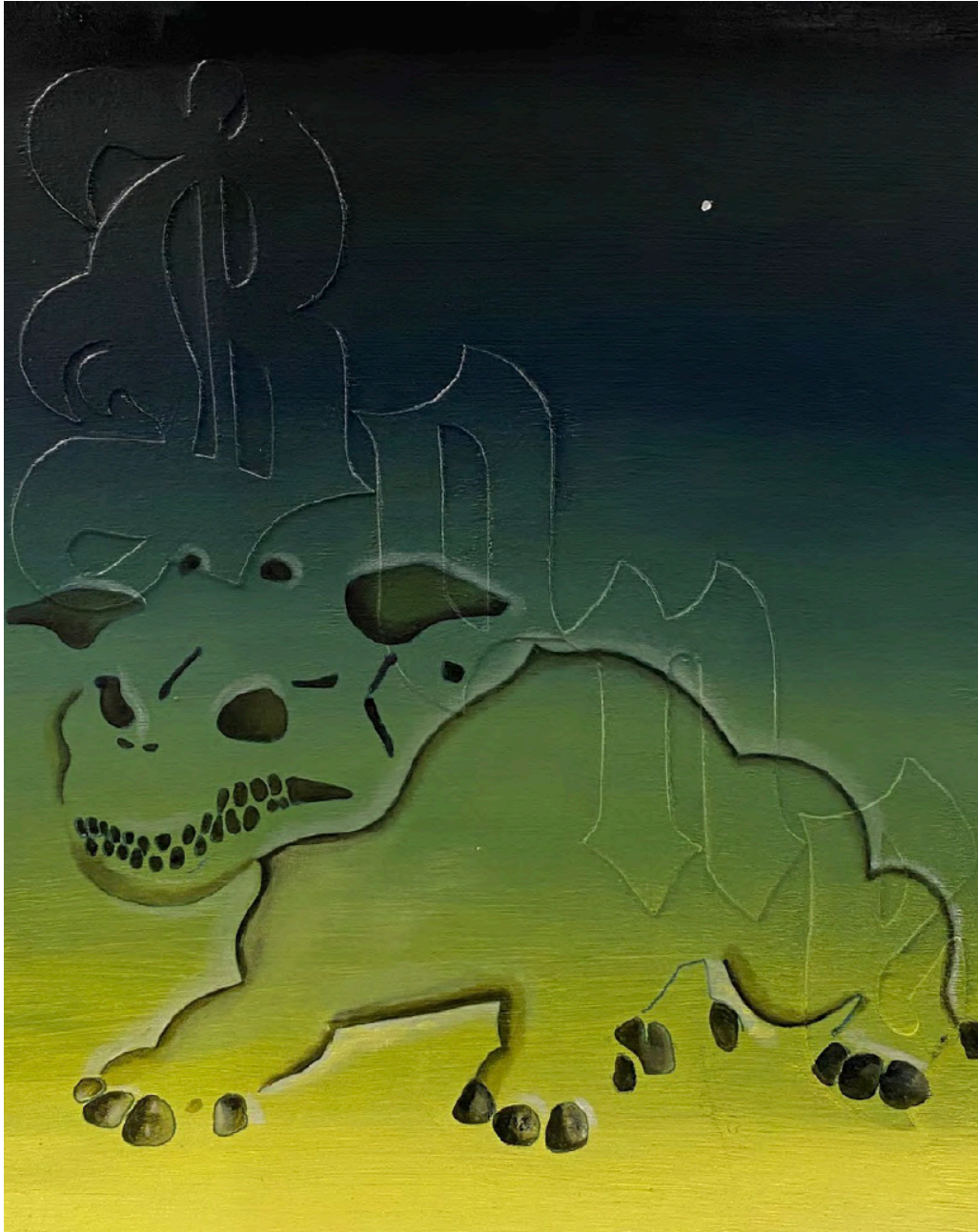
*Famous Bowl*, 2021, oil on panel, 11"x14"



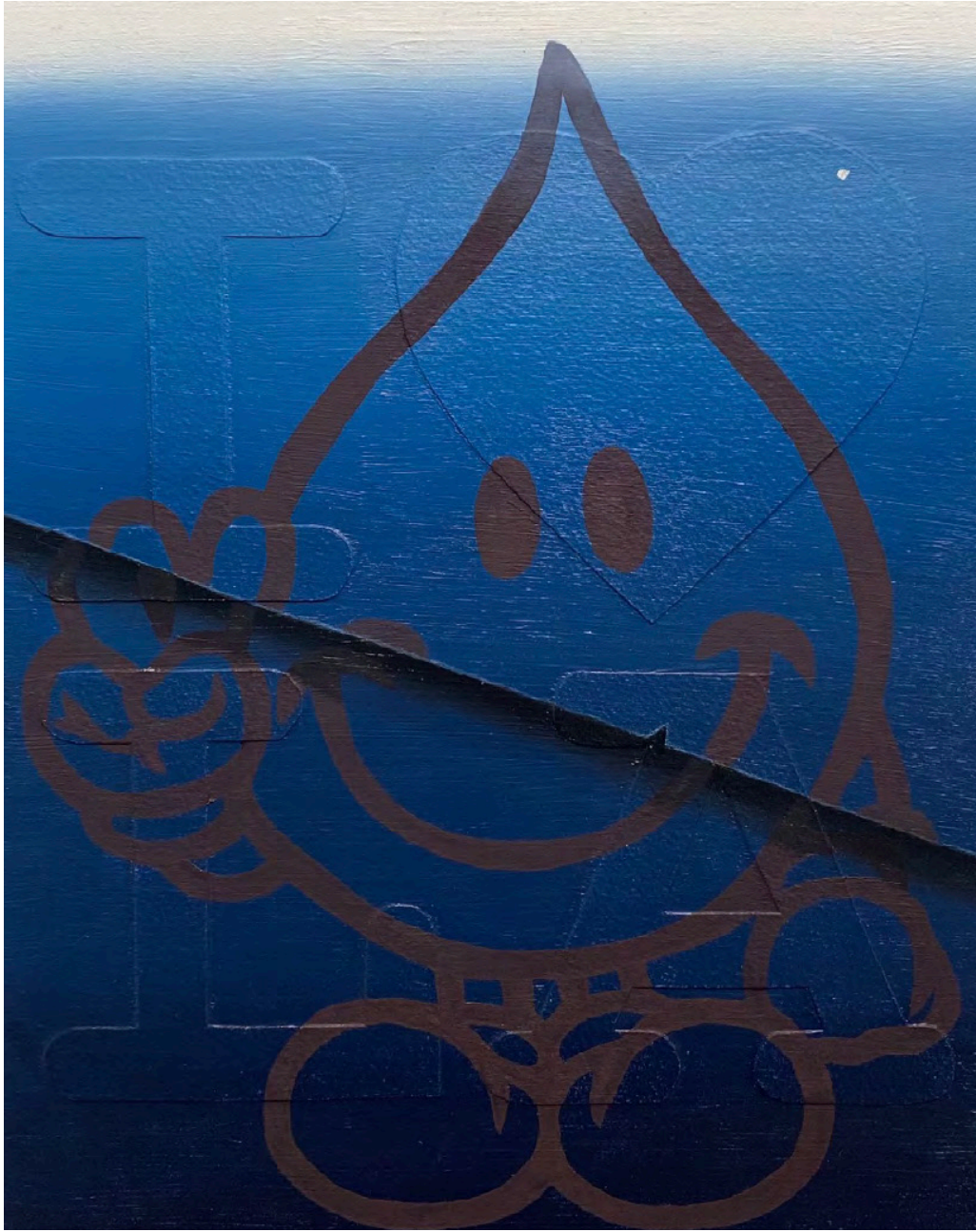
*Ruff Ryder, 2021, oil on panel, 16"x20"*



*Things of Remembrance Past, 2021, oil on panel, 16"x20"*



*Thuggish Ruggish Bone*, 2021, oil on panel, 11"x14"



*It's Dark and Hell is Hot, 2021, oil on panel, 11"x14"*





*Fairman Drive*, 2022, oil on panel, 12"x16"

# INTERVIEW WITH CJ SHAW

Conducted by Kaylee Fowler

---

**Kaylee Fowler:** Color is a strong component of your work; what is some of the thought that goes into your choice of palette, and what are some of your visual inspirations?

**CJ Shaw:** I think when I originally started working with the color blue I was drawn to how melancholic the color was, but I think now it isn't as overtly a sad color. Blue is the color of memory and remembrance so I think it's only fitting to use it as a color to depict images from my past. Recently the colors and gradients I've been using have been inspired by the sunsets and night skies I see on a daily basis. The colors themselves essentially create a timeline of sorts.

**KF:** In your practice you state that you want to re-present imagery from your childhood as icons, to preserve them. How does the act of preserving them as an adult change your relationship to the memory of them, if at all?

**CS:** Re-presenting these images is a form of time travel as I'm interacting with the past both in the present and the future. These images become preserved in a non-linear timeline as I can't necessarily pinpoint an exact time for them, but I know and remember their existence. Their existence and their preservation is a way of preserving my childhood. Something that seems so fleeting as I get older.

**KF:** How do you think these nostalgic references will be read by viewers? What do you hope viewers take away from your work?

**CS:** I don't really know what I'm expecting my viewers to get out of this experience. Maybe they can unlock a childhood memory of theirs. Maybe they can relate to these images. I think I'm really unsure of what can happen from these interactions.



## THE DEPS ARTIST PROFILE SERIES

The DEPS Artist Profile Series presented by Columbia College Chicago's Department of Exhibitions, Performance and Student Spaces (DEPS), is a virtual publication on select artists involved with the DEPS Galleries and the Columbia College Chicago community. Our goal with this series is to connect artist and viewer on a deeper level, and to highlight the amazing works and thoughts of our featured artists through interviews, artist biographies, and catalogs of work. Art has always been a way to connect with others, no matter where one may physically be. We hope by presenting the creativity and insights of the people involved in the DEPS Artist Profile Series that viewers may have one more way to stay in touch with, and support the arts community. The DEPS Artist Profile Series is managed by Fine Arts major and DEPS Exhibitions Assistants Kaylee Fowler and Sierra Delamarter. Graphic design is managed by DEPS Exhibitions Assistant Gray Beyer. This program is partially supported by a grant from the Illinois Arts Council Agency.

Learn more at: [colum.edu/deps](http://colum.edu/deps)

Contact information: Mark Porter, [mporter@colum.edu](mailto:mporter@colum.edu) / 312.369.6643

Follow us on [Instagram!](#)

Like us on [Facebook!](#)