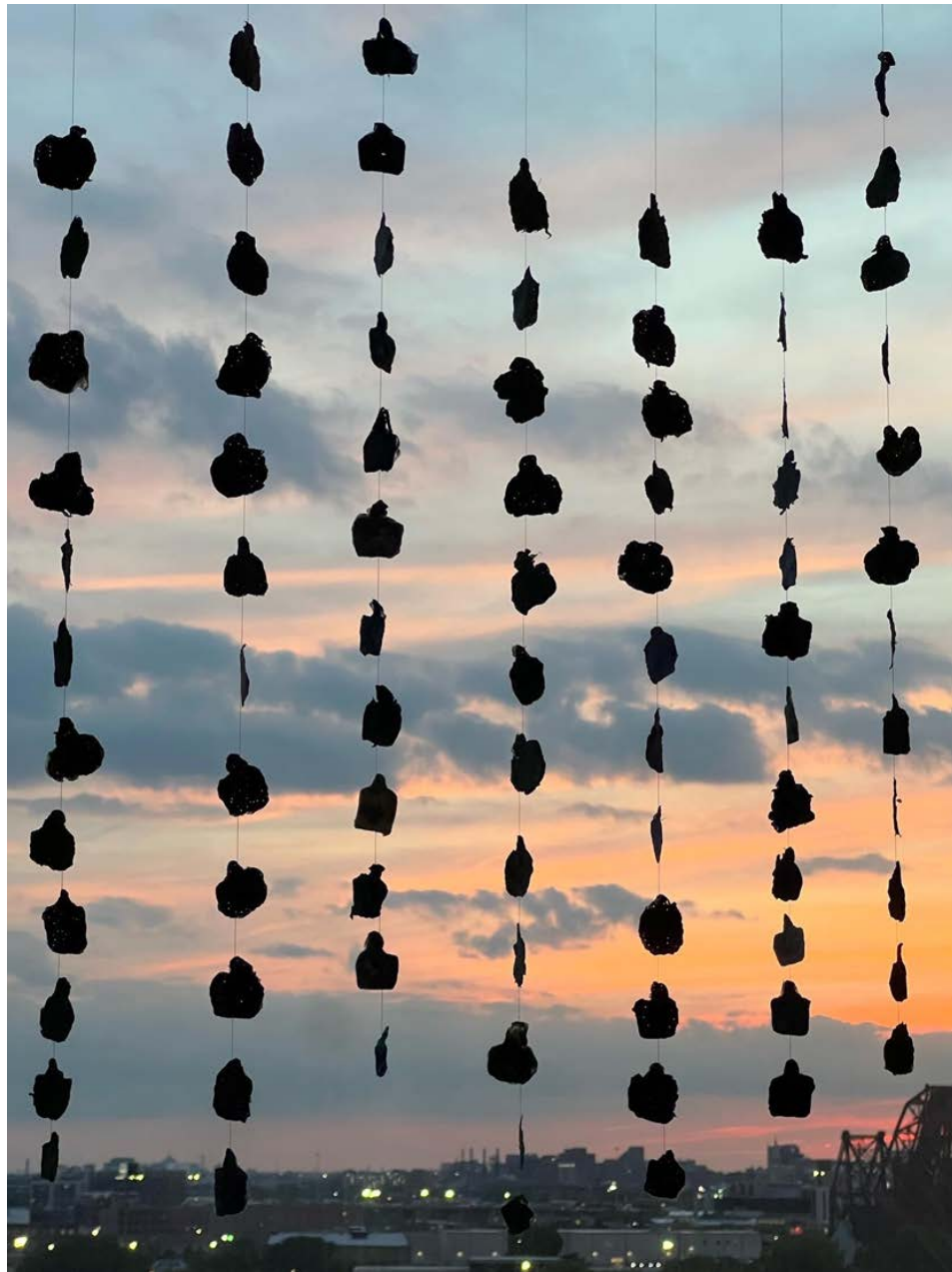


# CHARLOTTE BRISKIN

## GROUNDWORK

---



**DEPS ARTIST PROFILE SERIES**

February 9–March 1, 2023

# GROUNDWORK

---

*Groundwork* visualizes and explores the connections between our human bodies and our natural world. This exhibition encourages interactive play and offers a sanctuary inspired by the symbiotic relationships with plants.

# CHARLOTTE BRISKIN

---

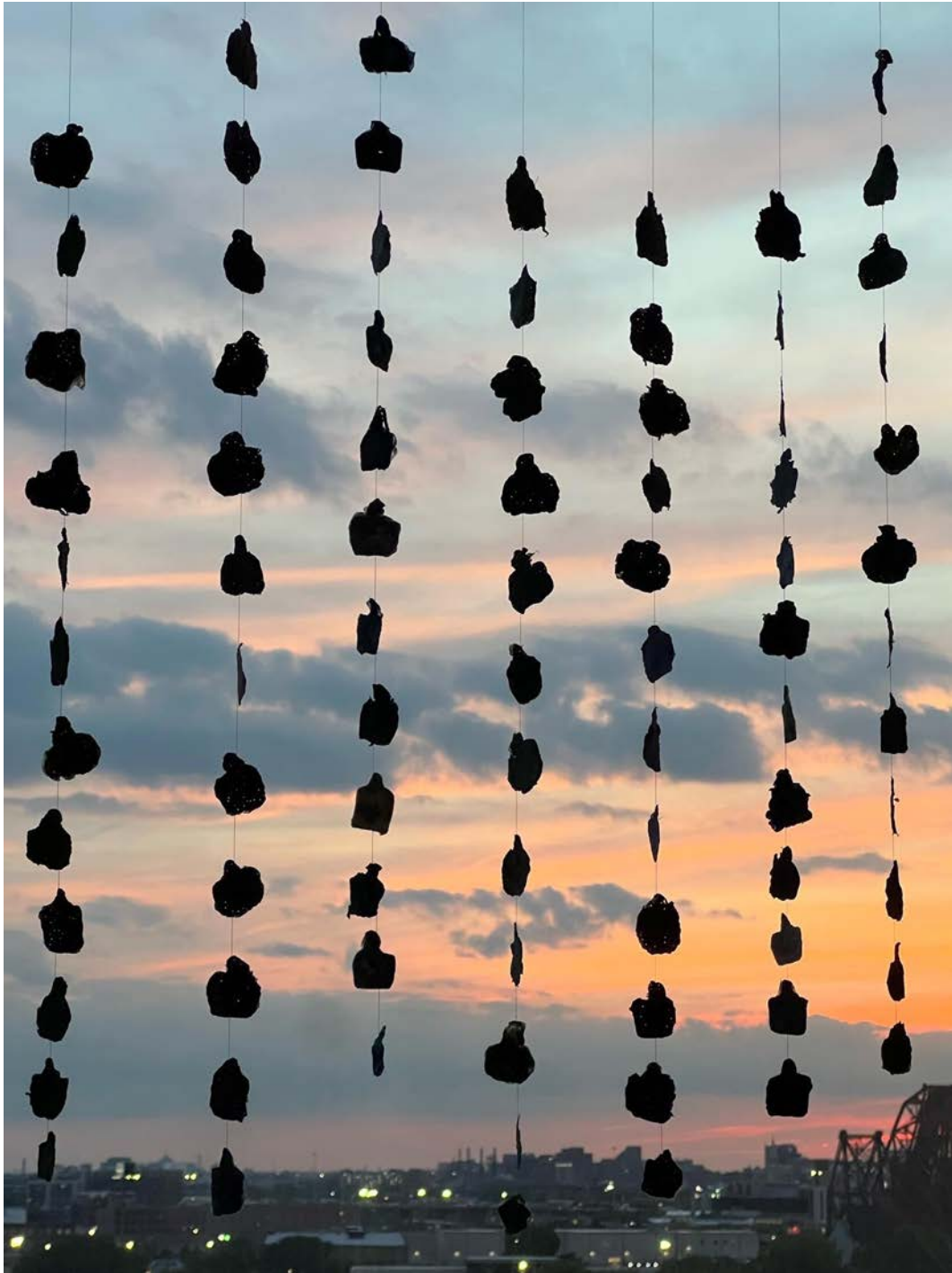
A lively garden of peculiar sleeping flora grows wild within each of us. **Charlotte Briskin** awakens these gardens by creating unique intimate experiences with her artwork. Briskin is inspired by the coexistence of plants and their interconnected relationships in the natural world.

She is interested in the similarities and relationships between cellular bodies, human bodies, bodies of water, planetary bodies, and celestial bodies. Her artwork creates a lively display of the unique gardens that we have the potential to cultivate within ourselves. Before we can cultivate and care for a healthy garden and outside world, we must first tend to our internal gardens and worlds. Through material exploration, Briskin's art questions our social misconceptions about individual bodily autonomy and inspires our internal sleeping gardens to awaken

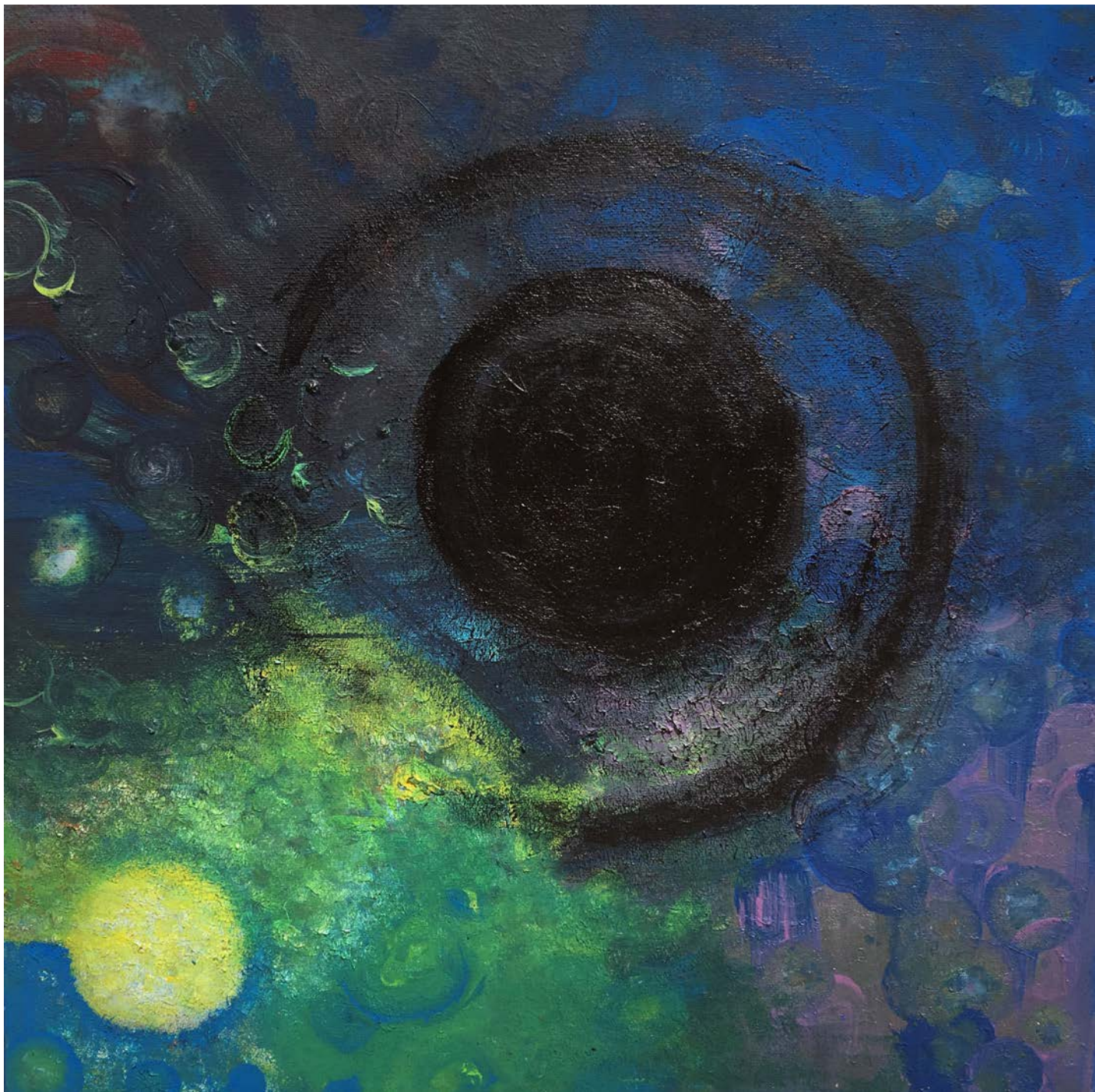
**Charlotte Briskin** is a sculptor and papermaker from Pennsylvania. Briskin uses a variety of interactive sculptural materials such as handmade paper, textiles, metal, found objects, and what other people call trash. Through material exploration she expresses the similarities between our human bodies and the natural world. Her work visualizes the synchronicities of life from microscopic levels to astronomical sizes. Briskin makes whimsical abstract paintings, prints, interactive sculptures and handmade paper with fantastic colors, strange shapes and energetic constellations that move and dance in curious ways.

**Website:** [charlottebriskin.myportfolio.com](http://charlottebriskin.myportfolio.com)

**Instagram:** [@chewingonrainbows](https://www.instagram.com/chewingonrainbows)



*Root Bodies*, 2022, embroidery on handmade abaca and mulberry paper



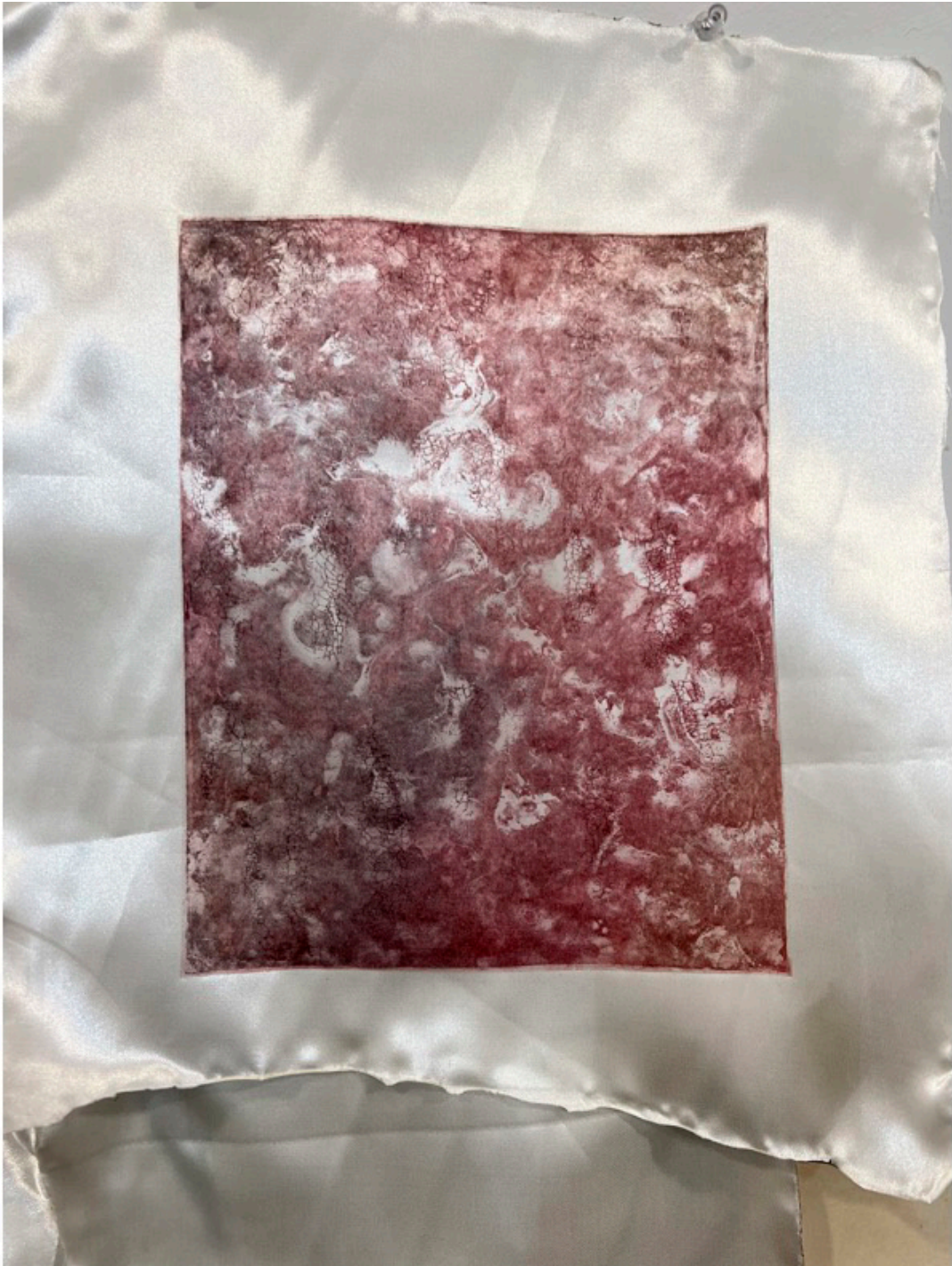
*Aadama*, 2019, acrylic on canvas, 20" x 20"



*Evaporation*, 2020, acrylic on canvas, 20" x 16"



*Grandmothers*, 2022, etching on satin, 11" x 8"



*Nervous System*, 2022, etching on satin, 12" x 9"





*Organette*, 2021, acrylic on canvas, 16" x 20"



*Pollen Grain Song*, 2021, acrylic on canvas, 20" x 16"



Untitled, 2023, embroidery on chiffon, 24"x12"



*Some sort of Symbiosis, 2023, embroidery on chiffon, CD's, phone lights, participants, dimensions variable*



Installation shot from *Groundwork*, 2022, handmade abaca paper

# INTERVIEW WITH CHARLOTTE BRISKIN

Conducted by Sierra Delamarter

---

**Sierra Delamarter:** You state, “A lively garden of peculiar sleeping flora grows wild within each of us.” Could you explain what the garden we all have inside of us is? How have you cultivated your own garden?

**Charlotte Briskin:** I believe that within the swarming sea of your thoughts there is a beautiful universe, unique to each person. Your wishes and desires transform themselves into creatures that roam the hallways of your brain. I visualize my own internal world as a garden, full of strange life. Crawling with bugs and insects, some helpful, some destructive. Every aspect of your being exists within you as planets, plants, stars, and seeds. I cultivate the garden within myself by making my inner child happy—creating messy art with my whole body.

**SD:** Much of your sculptural work uses handmade paper materials. How does papermaking lend itself to your artistic practice? How has your choice of medium changed as you have grown as an artist?

**CB:** I learned hand papermaking in the spring of 2022 in a papermaking class with Mellissa Potter. I immediately fell in love with paper as a material for self-exploration. From start to finish you work very closely with the fibers and pulp. Papermaking is a very hands-on artistic practice which allows me to fully engage my entire body when I’m making pulp and paper. This gets me out of my head and connected to my creative spirit. As I’ve grown as an artist, I have sought out materials that allow me to connect with the earth, and my own body. Paper allows me to work collaboratively with fibers as a visual language of textures, colors, gestures, and patterns that are present throughout every scale of nature.

**SD:** You express a great interest in our relationship with the natural world in your work. How does your body of work help to create a connection between human bodies and nature?

**CB:** I believe that human beings have an undeniable connection to the earth and a deepening responsibility to take care of the planet. One reason that I make art is to express the connections between our bodies, and nature. My body of work seeks to create maps of invisible energy, helping people to see the beauty within themselves and the world. I hope that engaging with my artwork creates deep connections between society and the earth that encourage people to take care of the planet we live on.



## THE DEPS ARTIST PROFILE SERIES

The DEPS Artist Profile Series presented by Columbia College Chicago's Department of Exhibitions, Performance and Student Spaces (DEPS), is a virtual publication on select artists involved with the DEPS Galleries and the Columbia College Chicago community. Our goal with this series is to connect artist and viewer on a deeper level, and to highlight the amazing works and thoughts of our featured artists through interviews, artist biographies, and catalogs of work. Art has always been a way to connect with others, no matter where one may physically be. We hope by presenting the creativity and insights of the people involved in the DEPS Artist Profile Series that viewers may have one more way to stay in touch with and support the arts community. The DEPS Artist Profile Series is managed by DEPS Exhibitions Assistant Gallery Coordinator Sierra Delamarter. Graphic design is managed by DEPS Exhibitions Social Media Assistant Coordinator Rachel Manlubatan. This program is partially supported by a grant from the Illinois Arts Council Agency.

**Learn more at:** [colum.edu/deps](http://colum.edu/deps)

**Contact information:** Mark Porter, [mporter@colum.edu](mailto:mporter@colum.edu) / 312.369.6643

Follow us on [Instagram!](#)

Like us on [Facebook!](#)

**C33 Gallery:** 33 E. Ida B. Wells Dr., First Floor, Chicago, IL 60605

**Gallery Hours:** Monday–Friday, 9 a.m.–5 p.m.